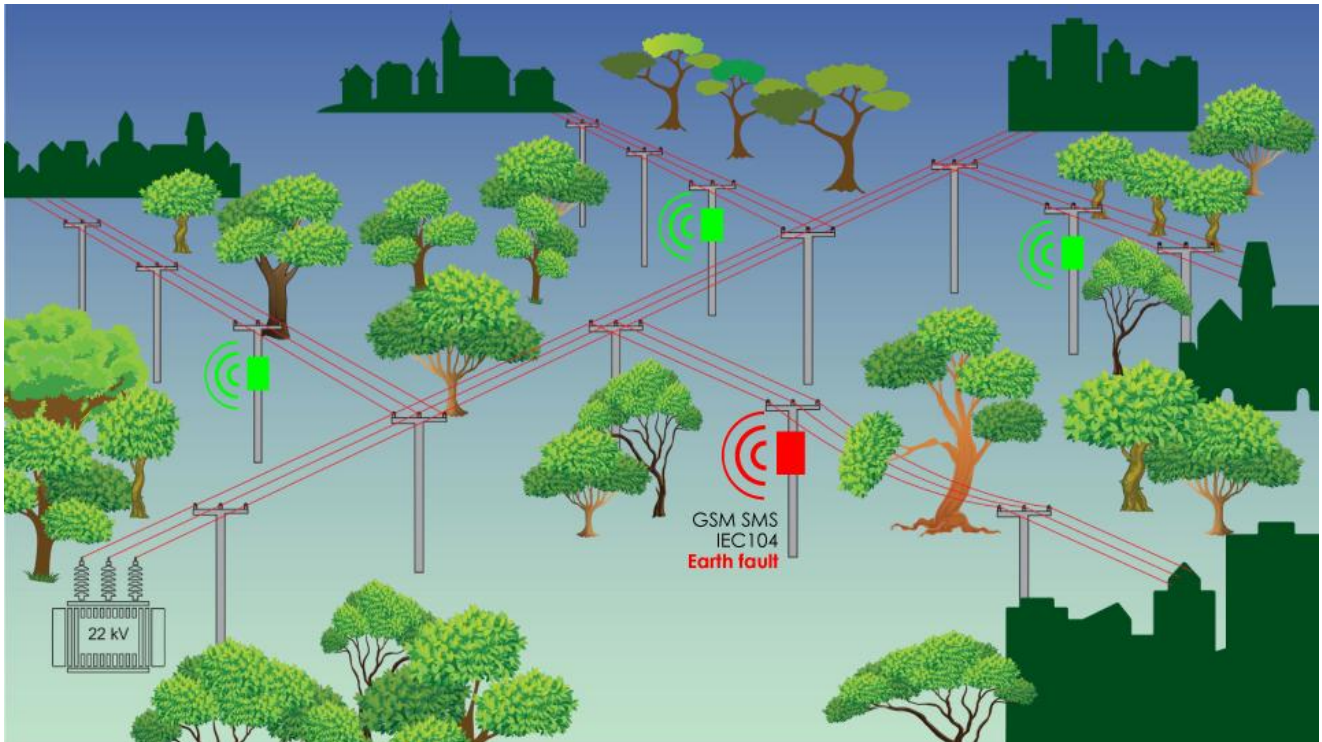


# Z30 FAULT INDICATOR

Pole mounted fault indicator

PROLAN 

Fast fault detection



## TO WHOM WE OFFER

Distribution System Operators (DSO)  
Maintenance Companies

## EXCEEDING FEATURES

### APPLICATION

On middle and low voltage distribution networks the installed protection and automation systems are able to manage the fault events. However, the exact location of faults usually must be found on the spot and must be manually reconnected by number of tests.

Our fault indicator supports this work and turns the work far more effective. The localization of fault gets faster and more exact, hence these faults can be solved quicker and in a much cost-effective way with **PROLAN fault indicator**.

As a consequence, service outage is shortened, and fieldwork is reduced!

- **Power source: lithium battery and solar panel**
- Built-in current and voltage measuring sensors
- Built-in GSM communication, inner or outer antenna
- **2G, 3G, 4G, LTE Cat M1/Cat NB1, SMS, IEC 60870-5-104**
- **IP-based online data connection**
  - Signalling the earth fault, short circuit events
  - Sending the diagnostics, measuring data
- LED-based, strong light status indications
- Local test functions with magnet
- GPS-based localisation (optional)
- **IP65 device box, mounting by strap-bands**
- The entire functioning can be parameterised remotely
- Maintenance-free operation over 12 years

# TECHNICAL DATA

## Application

Medium voltage	10...60 kV
Frequency	50 Hz
Earthing system	Resistive or direkt

## Circuit detection

Short-circuit detection	50...600 A
Earth fault detection	10...100 A
Relative detection	100...200 %
Short-circuit duration	20...1000 ms

## Delay

Voltage fall delay	1...100 s
Inrush delay	1...100 s
Alive message period	1...1000 h
Device reboot	remotely

## Device data

Communication	2G, 3G, 4G, LTE Cat M1/Cat NB1 SMS, IEC 60870-5-104, HTTPS
Power	lithium ion chargeable battery with PV panel
Battery / PV panel lifetime	>12 year
Operating temperature	-25 ...+60 °C
IP protection	IP65
Installation	Stapping band
Size	290,2 x 209,5 x 94,5
Weight	0.9 kg



## PROLAN

**Prolan Process Control Co.**  
H-2011 Budakalász, Szentendrei út 1-3.  
Hungary  
Phone: +36-20/954-3100  
Fax: +36-26/540-420  
info@prolan.hu  
www.prolan.hu