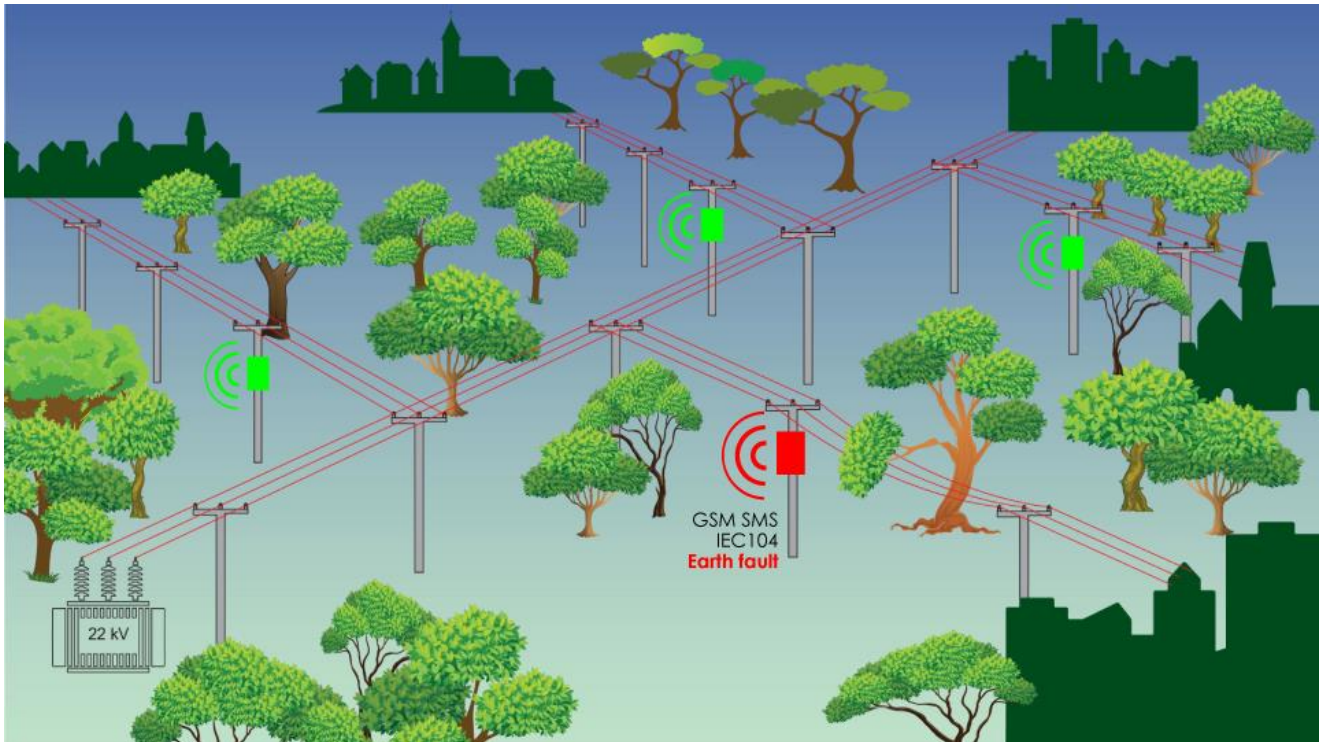


Z30 FAULT INDICATOR

Pole mounted fault indicator



Fast fault detection



TO WHOM WE OFFER

Distribution System Operators (DSO)
Maintenance Companies

EXCEEDING FEATURES

APPLICATION

On middle and low voltage distribution networks the installed protection and automation systems are able to manage the fault events. However, the exact location of faults usually must be found on the spot and must be manually reconnected by number of tests. Our fault indicator supports this work and turns the work far more effective. The localization of fault gets faster and more exact, hence these faults can be solved quicker and in a much cost-effective way with **PROLAN fault indicator**.

As a consequence, service outage is shortened, and fieldwork is reduced!

- **Earth fault, short-circuit, overcurrent and voltage fall event indication**
- Power: lithium ion non chargeable battery or chargeable with PV panel
- **Event driven mode with non-chargeable battery, online mode with PV panel**
- Remote FW upgrade, remote diagnostic, IP based communication
- **Remote configuration**
- LED for status
- Local test function with magnet or IR
- IP65 box

TECHNICAL DATA

Application

Medium voltage	kV	10...60
Frequency	Hz	50, 60
Earthing system		Resistive or direkt

Circuit detection

Short-circuit detection	A	10...1000
Fault detection	A	5...100
Relative detection	%	100...200
Short-circuit duration	ms	20...1000

Delay

Voltage fall delay	s	1...3600
Inrush delay	s	1...100
Alive message period	h	1...1000
Device reboot		remotely

Device data

Power		lithium ion non-chargeable battery or chargeable with PV panel
Battery / PV panel lifetime	year	6 /10
Operating temperature	°C	-25 ...+60
IP protection		IP65
Installation		Stapping band
Size	mm	220 x 145 x 180
Weight	kg	0.9
Communication		2G, 3G, 4G, LTE450, LTE Cat M1/Cat NB1
Communication protocol		SMS, IEC 60870-5-104, HTTPS



PROLAN

Prolan Process Control Co.
 H-2011 Budakalász, Szentendrei út 1-3.
 Hungary
 Phone: +36-20/954-3100
 Fax: +36-26/540-420
info@prolan.hu
www.prolan.hu